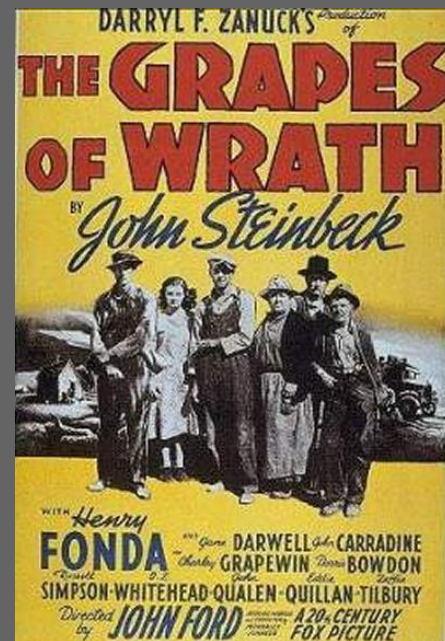


Les raisins de la colère



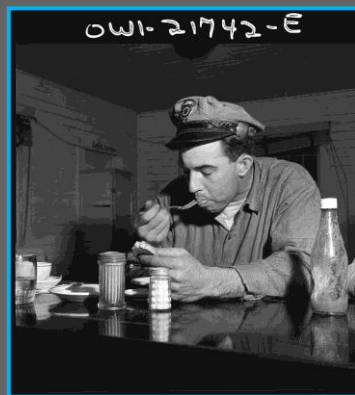
Structure du roman

- Première partie : Le départ (chapitre 1 à 11)
- Deuxième partie : Sur la route (chapitre 12 à 18)
- Troisième partie : En Californie (Chapitre 19 à 30)

Le départ



Chapitre 1



Chapitre 2



Chapitre 3



Chapitre 4



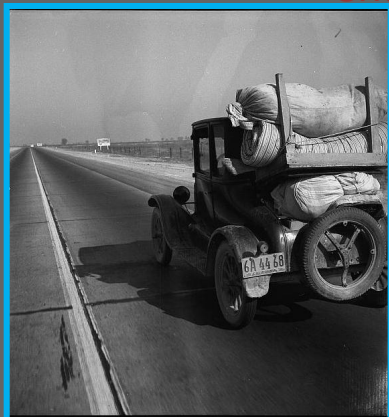
Chapitre 5



Chapitre 6



Chapitre 7



Chapitre 8



Chapitre 9



Chapitre 10



Chapitre 11





The winds of the "dust bowl" have piled up large drifts of soil against this farmer's barn near Liberal, Kansas



OWI-21742-E



Pearlington
(vicinity),
Mississippi.
Truck driver
eating at a
trucker's stop
along U.S.
Highway 90







John
Carradine
as Jim
Casey





AlexandreHogue-Erosion-No-2-Mother-Earth-Laid-Bare-1938





Corner of room in abandoned house. Albany County, New York





Service station,
used cars for sale.
Trailers are parked
very congested in
section near road
show and carnival.
Alexandria,
Louisiana





Drought refugee's car on U.S. Highway 99 between Bakersfield and Famoso, California. Note: the photographer passed twenty-eight cars of this type (drought refugees) between Bakersfield and Famoso, thirty-five miles, between 9:00 and 9:45 in the morning





32118-0

Proprietor of feed mill who also deals in secondhand farm equipment repainting a plow which he hopes to sell. Oklahoma City, Oklahoma





A truckload of household goods being moved off the farm of Everett Shoemaker, tenant farmer. Near Shadeland, Indiana

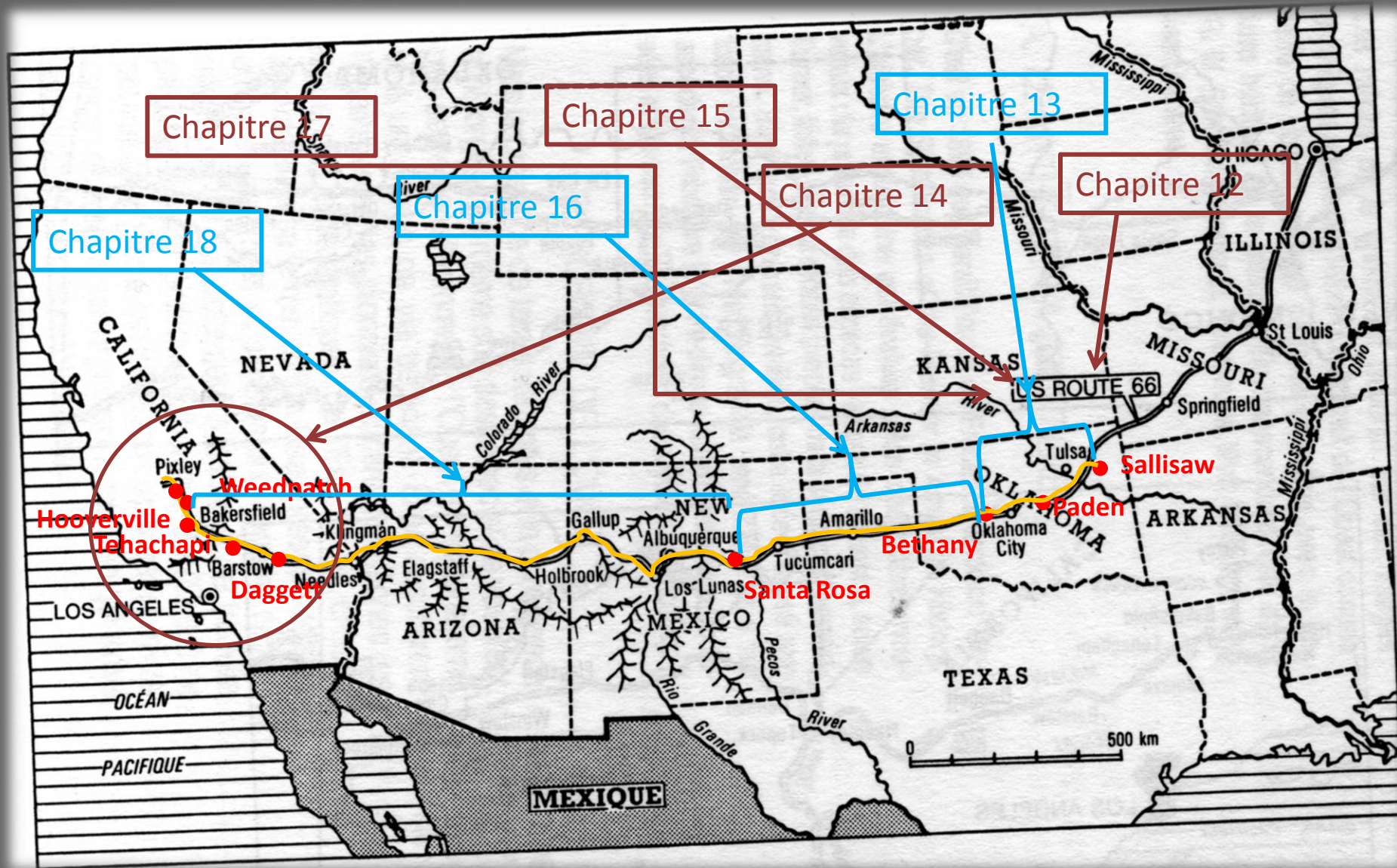




Abandoned
farm home
in wheat
field near
Gould,
Oklahoma



Sur la route





One of the trucks waiting for repairs or junking in FSA
(Farm Security Administration) warehouse depot,
Atlanta, Georgia





Captures d'écran, Film de John Ford



18903-E



Salinas Valley, California. Large scale, commercial agriculture. This single California County (Monterey) shipped 20,096 carlots of lettuce in 1934, or forty-five percent of all carlot shipments in the United States. In the same year 73.8 percent of all United States carlot shipments were made from Monterey County, Imperial Valley, California (7,797 carlots) and Maricopa County, Arizona (4,697). Production of lettuce is largely in the hands of a comparatively small number of grower-shippers, many of whom operate in two or all three of these Counties. Labor is principally Mexican and Filipino in the fields, and white American in the packing sheds. Many workers follow the harvests from one valley to the other, since plantings are staggered to maintain a fairly even flow of lettuce to the Eastern market throughout the year





Pearlington (vicinity), Mississippi. Truck drivers at a highway coffee stop on U.S. Highway 90





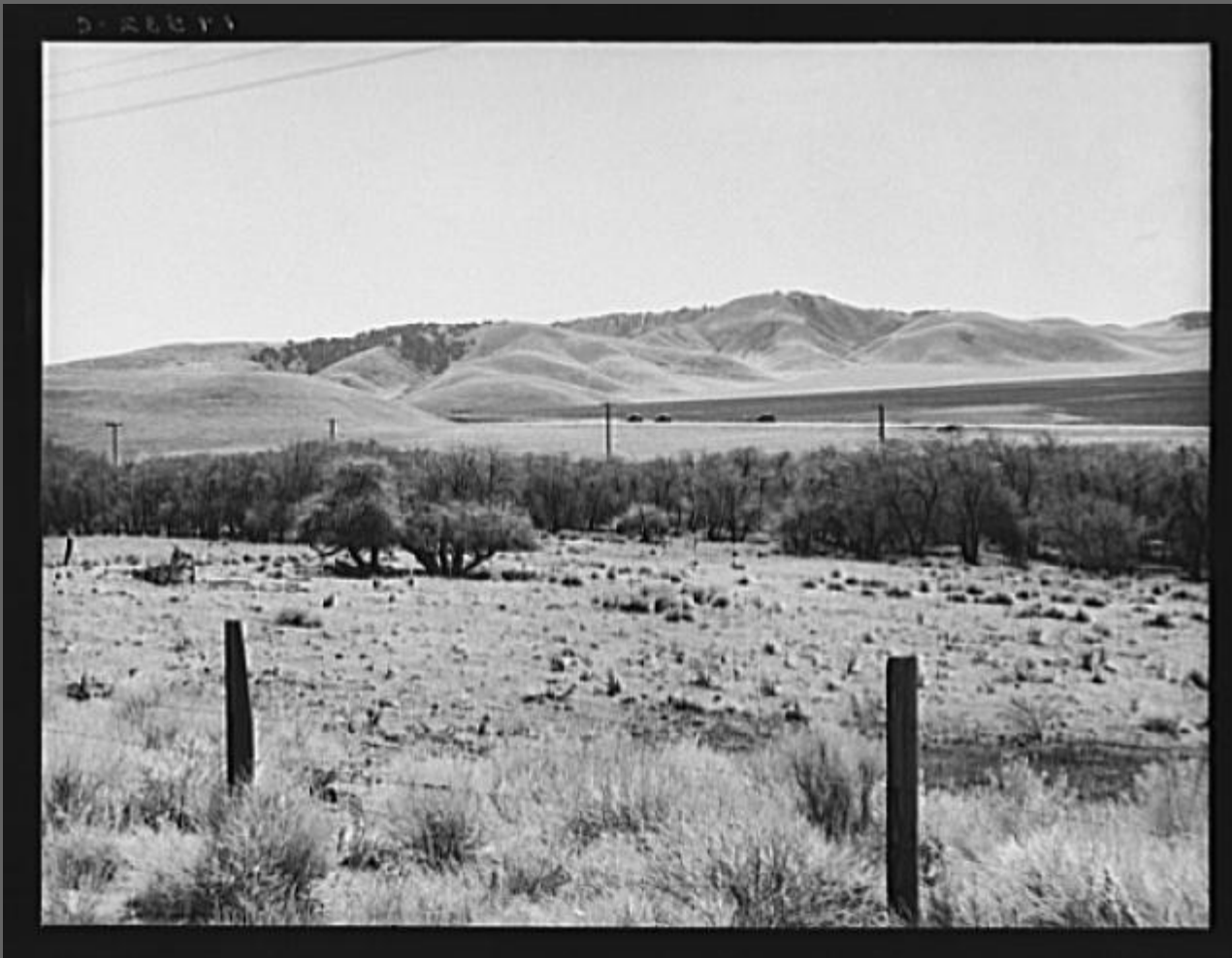
Getting gas, migrant family en route to California at small town near Henrietta [i.e., Henryetta,] Oklahoma





Squatter camp on county road near Calipatria. Forty families from the dust bowl have been camped here for months on the edge of the pea fields. There has been no work because the crop was frozen

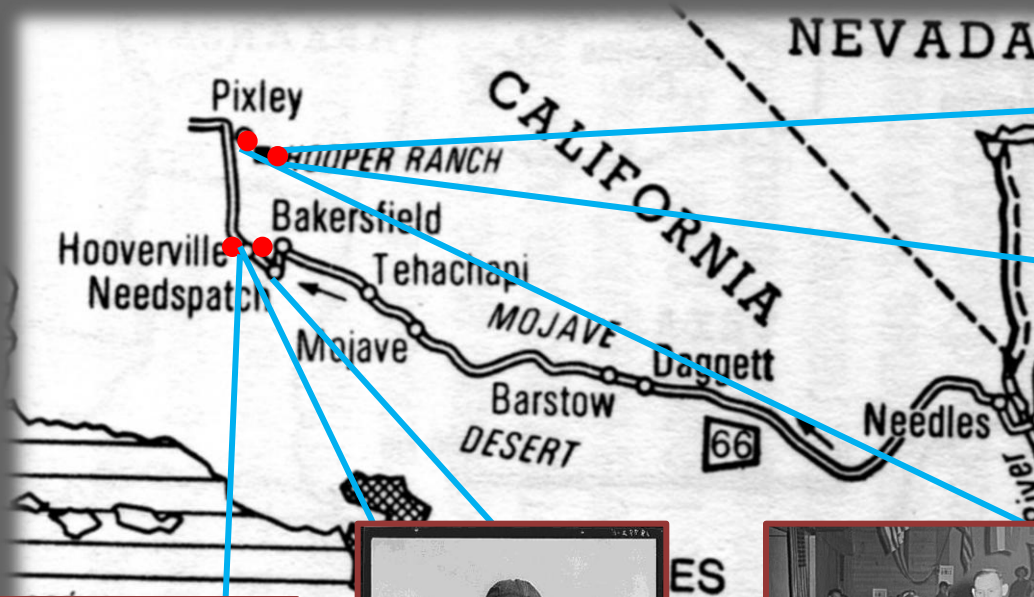




U.S. 99 on ridge over Tehachapi Mountains. Heavy truck route between Los Angeles and San Joaquin Valley over which migrants travel back and forth. California



En Californie



Chapitre 29



Chapitre 30



Chapitre 27



Chapitre 28



Chapitre 19



Chapitre 21



Chapitre 23



Chapitre 25



Chapitre 26



Chapitre 20



Chapitre 22



Chapitre 24





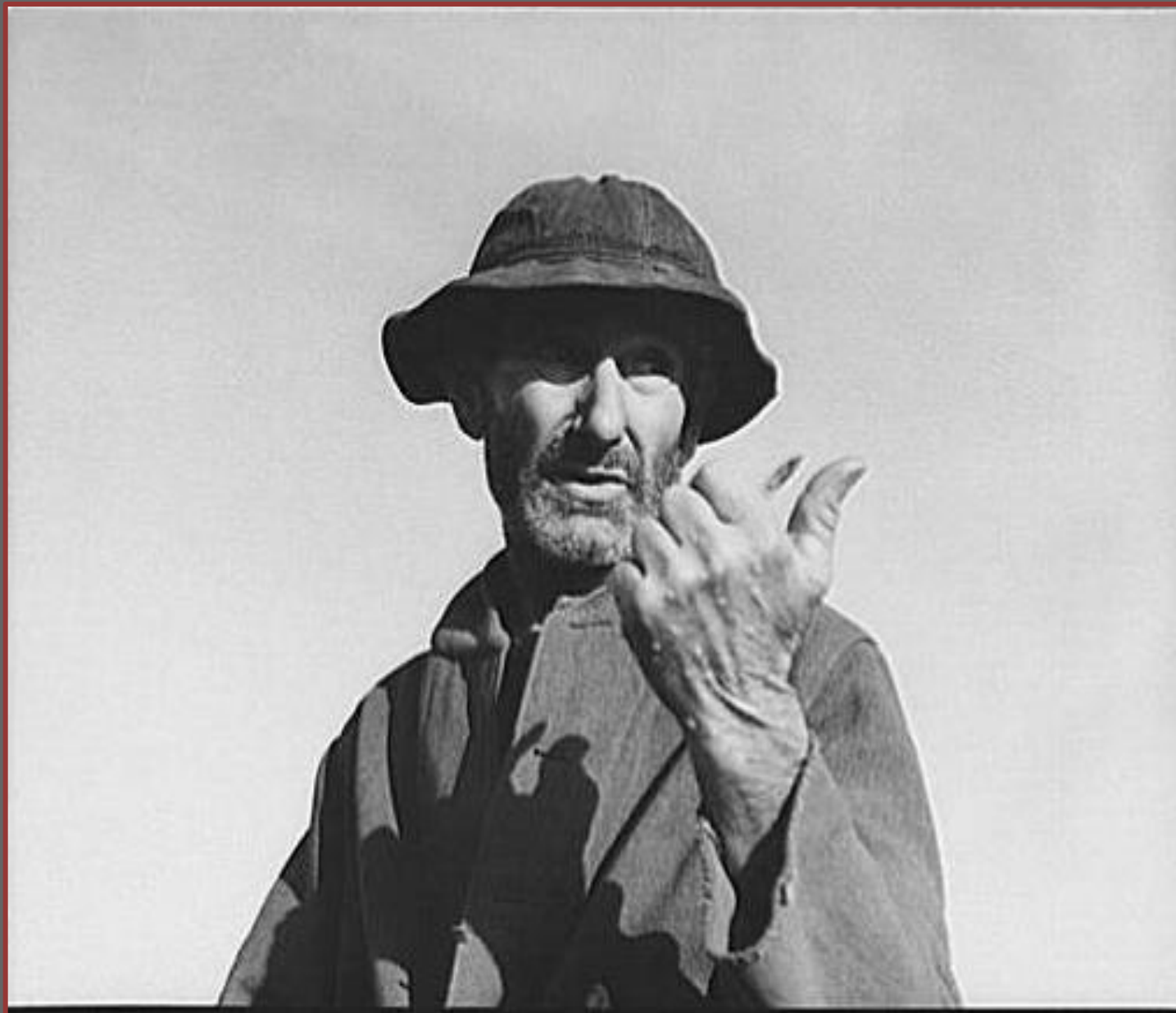
Hooverville of Bakersfield, California. A rapidly growing community of people living rent-free on the edge of the town dump in whatever kind of shelter available. Approximately one thousand people now living here and raising children





Migrant agricultural worker's family. Seven hungry children. Mother aged thirty-two. Father is native Californian. Nipomo, California





Cotton picker near Firebaugh, California





Bridgeton, New Jersey. FSA (Farm Security Administration) agricultural workers' camp. Pre-fabricated houses, made from materials not affected by wartime shortages, at the camp

Wives of migratory workers in the laundry room at the Agua Fria Migratory Labor Camp, Arizona. Hot and cold water are furnished by the camp, soap and other washing materials by the people





**Tulare County,
California. FSA
(Farm Security
Administration)
farm workers'
camp.**

**Agricultural
workers dance at
the President's
birthday ball**





Stag line at Saturday night dance. Robstown FSA (Farm Security Administration) camp, Texas



Saturday night dance in the community building of the Agua Fria migratory labor camp. Arizona





[Palm Beach, Fla., orange & grape fruit on same tree]



Girl in the
picket line at
the King Farm
strike.
Morrisville,
Pennsylvania





J.A. Johnson's oldest daughter picking cotton in cotton field, Statesville, North Carolina. He is a sharecropper, works about ten acres, receives half the cotton, must pay for half the fertilizer. Landlord furnishes stock and tools

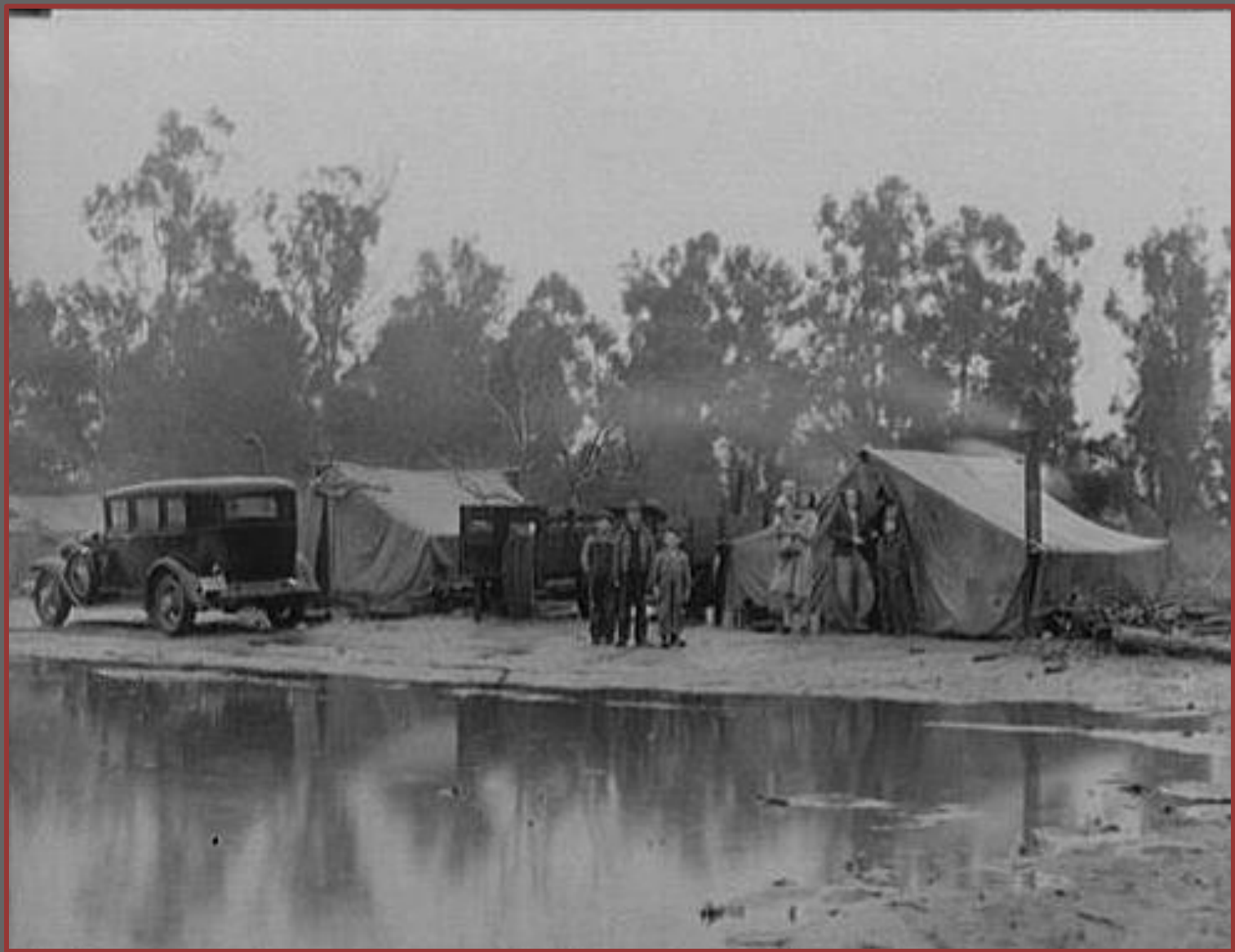




Freightcar
converted into
home in "Little
Oklahoma,"
California

Migrant camp, California





**Migrant pea pickers camp in the
rain. California**





**Mexican mother with three
days old baby, born in this
home. Crystal City, Texas**

